



Resource Center for Persons with Disabilities  
University Health and Wellbeing  
MICHIGAN STATE UNIVERSITY

# **2025 Awards & Appreciation Reception**

**April 4, 2025**

[uhw.msu.edu](http://uhw.msu.edu) | [rcpd.msu.edu](http://rcpd.msu.edu)



## A MESSAGE FROM RCPD DIRECTOR

Welcome to the Resource Center for Persons with Disabilities (RCPD) Annual Awards and Appreciation Reception! It is a pleasure to have you join us for this year's event. During today's reception, we will be celebrating outstanding achievements and contributions of scholarship recipients, exceptional faculty and staff, and generous donors supporting RCPD. Though I am new to Michigan State University, I know that excellence is a long, proud Spartan tradition.

As you may know, the Resource Center for Persons with Disabilities (RCPD) was created in the 1970s as MSU's response for equal access to a university education for all students. Over the years, the foundational services for students with mobility and visual disabilities expanded to include services for students who were deaf or hard of hearing, those with learning disabilities, brain injuries, psychiatric, and various chronic health conditions. We have also broadened our services to include services for MSU employees with disabilities. Today, as part of University Health and Wellbeing, we take a holistic, one-team approach to provide resources, develop programming, and find collaborative solutions. It is inspiring to be a part of this heritage in action, and I am amazed by the team that continues this legacy.

Throughout history, stars have served as a compass, guiding travelers through vast oceans and deserts. Our reception theme "Look to the Stars" aims to inspire us as we continue our journey to foster a culture of care on campus. We are committed to ensuring that resources are accessible and that every Spartan feels a sense of inclusivity and belonging. Together, we can navigate towards a brighter future for students, faculty, and staff. I am glad you are able to celebrate with us today. The most important thing RCPD does, perhaps also the hardest to measure, is create community. From us in the Resource Center for Persons with Disabilities, thank you for being a part of our community, and thank you for joining us on this journey.



Allen Sheffield  
RCPD Director

# SCHEDULE OF EVENTS

**Emcees (Tower Guard Students)**

Surabhi Gangadkar, Manuel Munoz Vallejo  
& Kate Roy

**Opening Remarks**

Dr. Alexis Travis, Assistant Provost/  
Executive Director of Health & Wellbeing

**Welcome**

Allen Sheffield, RCPD Director

**A Stellar Prelude**

Tyler Mazone,  
Clarinetist, Composer, Musician

**Recognition of Student Artists**

Colleen Floyd & Jessica Lutz

---

**Presentation of Awards & Scholarships:**

**Outstanding Alumni Award**

**Spirit of Ability Award**

**Student Leadership & Service Award**

**Trent Pysarchik Internship Endowment Scholarship**

**Robert Decker & Benjamin Muns Friendship Memorial Scholarship**

**Katrina Tagget Memorial Fellowship**

**Shawn M. Koch Memorial Scholarship**

**Samaritan Scholar Award**

**Education Abroad Scholarship**

---

**Closing Remarks**



## MUSICIAN: TYLER MAZONE



Tyler Mazone is a Deaf and neurodivergent clarinetist and composer based in Michigan. He is working towards a Doctorate in Composition at Michigan State University and is a graduate of there and the Crane School of Music. Tyler advocates for accessibility in music in small and large ensembles by molding his work for the performers and educators he composes for. Tyler enjoys actively being a part of new clarinet consortiums, particularly for low clarinets such as alto, bass, and contra. Tyler is also published on his website and with various publishers such as Neil A. Kjos, CAMCo, TUX People's Music, and Randall Standridge Music. Outside of composition, you'll find Tyler hiking, reading a book, listening to music, or playing video games!

### **A Stellar Prelude**

Tyler Mazone

"This short solo for bass clarinet is about the birth of a star inside a nebula. The piece starts off calmly and slowly, building up gradually to a climax before eventually settling back down. This represents the humble beginnings of a star, to when there is chaos with debris all over the solar system with collisions and planets forming. At the end of this long process, millions of years, the star will finally settle into its main sequence stage in which it will remain for another 3-5 billion years."

## FEATURED STUDENT ARTISTS



### **Summer of Gardening by Annabella Barry**

I made this piece for my Landscape Architecture portfolio to display my personality and passion through visual art.



### **Pulse of the Labyrinth by Ian Joseph Nikesch**

My piece is inspired by the duality of human emotion and the masks we wear to navigate the world. The red represents turmoil and negativity, while the blue symbolizes hope and calm, showing the constant push and pull between these forces. The black background represents the front we put on for others to hide our true emotions. The carved lines reveal the cracks in that façade—those moments where our true selves slip through. Those cracks are a labyrinth and confusing and hard to navigate. If you pay attention it's all one line and it's all connected. This piece reflects the balance between hiding and revealing, and the beauty in embracing both our strength and fragility.



### **Untitled by Emma Cohn**

I have wanted to combine my interest in going into physical therapy with my artistic abilities so I created a 20 piece portfolio with anatomically correct paintings and drawings. In the long run this will help me with better memorizing bone structures for when I get into more PT related classes as well as in grad school.



### **Grandma's House by Alec Barstow**

My grandmother passed away last year. This house will be demolished in 2025 to build a new foundation for a new house. I spent a lot of time in this house, and even lived there for two years in my childhood. It has been in our family for over 100 years. I painted the house (and barn) to remember and remind my family of the house that once held so much life.

## FEATURED STUDENT ARTISTS



### **Alaskan Brown Bear by Will McKarns**

Bears are my favorite animal and when i traveled to Alaska I was blessed with the opportunity of seeing bears.



### **Savannah Sparrow by Emma Andrechek**

Similar to us, every bird is unique. I love capturing photos of birds to showcase the diversity between species. This particular image shows a Savannah Sparrow which is different from other sparrows I have seen in how it rests on a bright purple lupine.

### **Above Water (Poem) by Nayeli Diaz**

The piece illustrates the feeling of struggling with an invisible disability. The water plays the part of the world, cold and unfeeling, dragging you down with all its expectations. But in the end, it is about growing to accept yourself and finding a home however you can in a world that was not made for you.

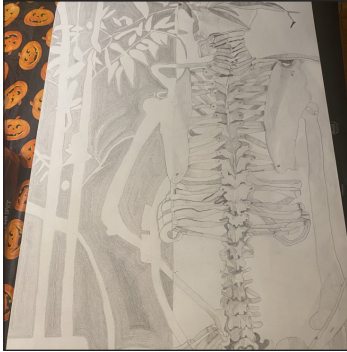


### **Forgive All Of Yourselves by Alina Ahmad**

I made this piece to emphasize and remind myself to give myself grace even in the toughest times. It is hard for me to do this especially as one who is a person with a disability. I made this piece to also remember that I need to treat myself with the same amount of kindness as I do to others.



# FEATURED STUDENT ARTISTS



## **Positive and Negative space of skeleton drawing by Ana Pace**

I was never really good at drawing, and this was my opportunity to practice, practice, practice and it really paid off.



## **Goat with the Spider by Vivian Smith**

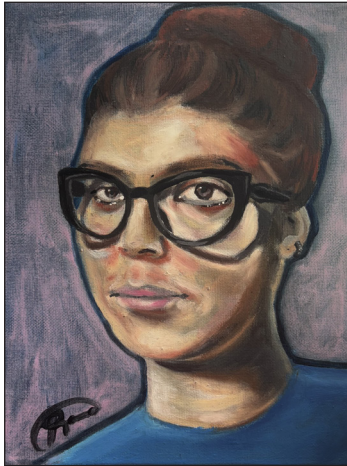
This work is made with the struggles of invisible disabilities in mind. An otherwise regular looking wild goat that is burdened by a spider blocking its vision and spreading its webs throughout its fur, which is quite uncomfortable for the goat. The webs are thin, difficult to see, and hard to get rid of when the source of them is still living on the goat itself. Sometimes you can see the spider, the source of the goat's discomfort, but when it is in hiding, the only one aware of the webs that seem to stick to its skin and fur is the goat. There's no obvious explanation for if the goat is acting oddly, except that it is being irrational. It's only when you ask it "what is bothering you?" that you might learn about the spider that lives on its body, continuously creating the sticky webs.



## **Artwork by Zainab Abdulla**

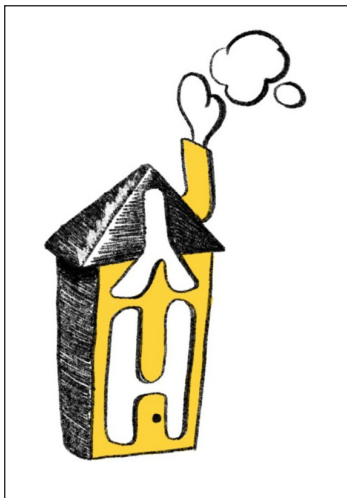
I like to draw human faces because there are a lot of details within the face and it's something challenging. I also like to draw birds, roses, and certain animals. My inspiration is my feelings, I draw things based on how I feel, drawing the face of a human I usually try to draw imaginary faces and sometimes I draw people that I know or like to draw like celebrities, and actors.

## FEATURED STUDENT ARTISTS



### **The Calmest Portrait by Romo**

This portrait tells my story and describes “The Calmest Portrait” due to the struggles I had to overcome mentally. I started a layer of blue in the background to symbolize the sadness/hardship I endured. While a soft pink layer of the nicest, calmest shade is on top of the blue to symbolize my mindset now. The stance of the pose is more confident with a hint of a smile to display my readiness for a fight, and no matter what, I won’t give up. I draw portraits often, and as much as this is dedicated to myself, I also dedicate this portrait to many who, despite their struggles, continue to fight forward.



### **Yellowhouse by Sam Van Winkle**

We all have had a passion for playing music for a long time and we all wanted to form a band. Our passion is the music, getting the crowd excited and having a good time. We play rock oriented music but it goes all over the place, most songs are up beat, others are laid back, and some hit really heavily.

### **SAD Days (Poem) by Sara Angus**

I’ve struggled with SAD for a long time. It becomes a very difficult time for me to focus on school and feel motivated enough to get out of bed, let alone get to a class or do an assignment. With the RCPD resources MSU provides, I have been helped with this greatly.

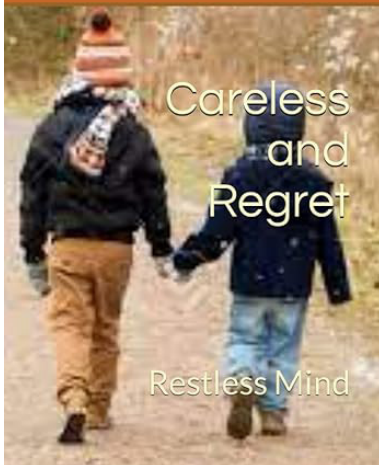


### **Solitude by Jared Visser**

I drew this because I like the outdoors, and it’s a place where I like to imagine myself living someday.

## FEATURED STUDENT ARTISTS

Ali Abdullah



### Careless and Regret by Ali Abdullah

This is a fictional story about two brothers but one of the brothers does something so bad to his brother.



### Creation by Amaya Skeene

I just painted what I felt honestly... when I feel bigger than my body, or — like my mind is about to explode and destroy everything. I paint. I definitely view this (and most of my art) as a type of abnormal self portrait from the inside out... :) !



### Dreams by Ella O'Beirne

These are my characters and they usually go through dark lore in their story. So instead I wanted to draw them having a hopeful, intimate happy moment between each other. Not worrying about the future. Just enjoying each others company. The background is of the window sill seating area in my own bedroom, the most comforting place I know.



## FEATURED STUDENT ARTISTS



**The Awaiting Luck by Mustafa Abdullah**  
I wrote a story about me.



**We Are One by Paulina Hoffman**

Disabled sounds like a disadvantage, it sounds like a separation, but this piece of art symbolizes the beauty of us all coming together as a whole. We are one. We are not set apart because of our differences. We contribute to the good of our society and MSU.

# AWARDS

## Outstanding Alumni Award

The Outstanding Alumni Award recognizes the accomplishments, leadership, and dedication of MSU graduates who have made significant contributions to their field. Their achievements illustrate the power of education, persistence, and creativity in reaching life goals. We are honored to call them Spartans and are grateful for the way they apply their education to making a positive impact on society.

Presented to:

## Marie Cherry

Certified Peer Support Specialist  
BA Music, Michigan State University



Starting out as a Music Therapy major, Marie envisioned a life dedicated to using her creative gifts for healing others and training others to do the same. She experienced her first mental health crisis less than a year before her degree program was to be completed, which required her to step back from school multiple times before feeling well enough to return. With support from John Pedraza at RCPD, Leigh White at Olin Health Center, John Lee and Dave Novicki at the Counseling Center, and School of Music faculty, Marie was able to graduate with a general music degree. She also co-founded MSU's student chapter of the National Alliance on Mental Illness (NAMI) and participated in mental health-related student support groups organized by Olin & Counseling Center staff. Marie went on to pursue graduate study in Rehabilitation Counseling as a way to pay it all forward, though health concerns made it necessary once again to step back and focus on self-care.

Marie spent the next several years taking an active role in her emotional health, exploring different types of work, leaning on social and spiritual support, and continuing to teach and perform music at every opportunity. She is now employed at her home county's Certified Community Behavioral Health Clinic, sharing her lived experience to support others in recovery from the impact of mental health, trauma, addiction, and grief. The knowledge, skills, resources, and networking acquired during her time at MSU have been indispensable both at work and in her personal life. Marie continues to be a passionate advocate for individuals with psychiatric and neurodivergent disabilities as she shares the wisdom and insight she has gained in her personal journey navigating these circumstances.

# AWARDS

## Spirit of Ability Award

The Spirit of Ability Award commemorates the empowering heritage of founders who saw disability not as limiting but as part of diverse human nature. They opened higher education to people whose disabilities were commonly perceived by society to preclude excellence. Honorees are contemporary leaders who continue this MSU tradition of creating vibrant, inclusive environments that welcome, fortify, and compassionately challenge each person to reach their fullest potential.

Presented to:

## Robert Mueller

Special Assignment and Occupancy Coordinator,  
Residence Education & Housing Services

Robert has been on the MSU Housing Assignments Office team since July of 2022, and moved into the Special Assignment Coordinator position in December of 2022. Robert is an MSU alumnus, having graduated in 2021 with a degree in community sustainability. Born and raised in Lansing, MSU has assumed a major role throughout Robert's life, and they are delighted to continue engaging with the campus community in their current position. They would like to acknowledge how much of a pleasure it is to collaborate with the wonderful folks in the RCPD, and to spend each day working with and supporting our incredible students.



# AWARDS

## Student Leadership & Service Award

The Student Leadership and Service Award recognizes outstanding leadership within the RCPD and the broader community. These students uphold MSU's core values of quality, inclusiveness, and connectivity as they prepare for lives of purpose.

Presented to:

## Brooke Jeffery

Doctoral Candidate, Integrative Biology  
College of Natural Science



Brooke Jeffery is a PhD candidate in the Department of Integrative Biology and the Ecology, Evolution, and Behavior program. In 2022, Brooke founded the Graduate Student Accessibility and Support Network (GSASN), MSU's first university-wide student organization for neurodivergent, disabled, and chronically ill graduate/professional students. As GSASN President for three years, she has led GSASN's mission of getting disabled graduate students access to the health care, emotional support, and institutional backing they need to successfully complete their academic program(s). She has also co-organized various educational, professional development, and outreach opportunities for this population of graduate students. Brooke's work with GSASN has made her a leader in disability inclusion at MSU—engaging with the Graduate Employees Union to expand parking access for disabled graduate students on campus, working with university administration on increasing accessibility as a representative on the Presidential Advisory Committee on Disability Issues (PACDI), co-planning the annual MSU Disability Summit, serving as a panelist or presenter for numerous RCPD events aimed to educate MSU faculty and staff on disabled graduate student experiences, and speaking with prospective and existing grad students in various departments about GSASN and resources for disabled students. Brooke is grateful for the vibrant disability community at MSU and hopes to someday leave a legacy of disability inclusion that always elevates the voices of disabled graduate students.

# SCHOLARSHIPS



## Trent Pysarchik Internship Endowment

Trent Pysarchik arrived at MSU as a freshman in 2004 and pursued an education in journalism. Trent passed away in 2011, and is remembered as a loving, caring, and determined individual. In celebration of his life and his positive outlook throughout the challenges he faced, the RCPD is honored to join the family and friends of Trent Pysarchik in establishing the Trent Pysarchik Internship Endowment. In Trent's honor, we apply private gifts through this endowment to help students with disabilities gain meaningful internships and other professional development which allows them to gain real-world experiences that culminate in rewarding careers.

Presented to:



## Zoey Chamberlain

Junior,  
Animal Science Major



## Aprill Stinson

Graduate Student (2nd Year),  
Masters in Social Work



# SCHOLARSHIPS



## Robert L. Decker & Benjamin Muns Friendship Memorial Scholarship

The Robert L. Decker and Benjamin Muns Friendship Memorial Scholarship is awarded in memory and recognition of two Ford Motor Company executives who worked together and, as friends, died together in a small airplane crash. The two friends were committed to increasing the productivity of the workforce while enriching the quality of the workplace environment. This scholarship provides graduate study opportunities and recognizes contributions of graduate students with disabilities.

Presented to:



**Alexa Andersen**

Doctoral Candidate,  
College of Nursing



**Loveleen Kaur**

Doctoral Candidate,  
College of Nursing



**Brooke Jeffery**

Doctoral Candidate,  
College of Natural Science



**Cordelia Tuan**

Doctoral Candidate,  
College of Human Medicine



# SCHOLARSHIPS



## Katrina Tagget Memorial Fellowship

As a student majoring in Public Administration and Public Policy with a specialization in Political Economics, Katrina Tagget earned a place on the Dean's List every semester starting with her freshman year. During her last two years at MSU she served as an RCPD mentor, and cited this experience as one her of most important accomplishments. On September 20, 2008, Katrina left her place on earth. But, through the generosity of her family and friends, this fellowship both memorializes Katrina's contributions and encourages others with disabilities to excel academically and through service to others.

Presented to:



### Nicole Jolley

Sophomore,  
Public Relations Major



### Katie Hamilton

Freshman,  
Psychology Major

# SCHOLARSHIPS



## Shawn M. Koch Memorial Scholarship

An alumnus of the College of Arts and Letters at MSU, Shawn Koch was known for his voracious appetite for knowledge. Appreciative of a wide range of people, viewpoints and cultures, Shawn ventured on a study abroad to Ecuador during his senior year. It was an experience that led him to countless other journeys throughout his life. Shawn lost a brave battle with brain cancer on June 13, 2011, at 34 years of age, but he remains an ambassador for MSU as an embodiment of Spartan leadership. This scholarship is awarded to students whose lives have been directly impacted by cancer, either personally or through a family member or friend.

Presented to:



## Katherine Howard

Junior,  
Special Education

# SCHOLARSHIPS



## Samaritan Scholar Awards

Established by MSU alumni Jim and Judy DeLapa, the Samaritan Foundation has generously assisted students for more than two decades. In 2003, the Foundation began offering scholarships through the RCPD, providing educational support to sophomores, juniors, and seniors with disabilities, and distinguishing itself by offering the first scholarship for MSU undergraduate students with disabilities.

Presented to:



### Maxwell Regenwor

Freshman, Exploring  
Business Preference Major



### Mark Powers

Junior,  
Horticulture Major



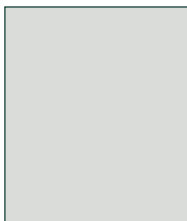
### David Hitts

Senior, Medical Laboratory  
Science Major, Bioethics Minor



### Katelynn Seltzer

Junior, Arts and Humanities  
(BA) and Studio Art (BFA)  
Majors



### Lauryn Crandall

Senior,  
Data Science Major

# SCHOLARSHIPS



## Education Abroad Scholarships

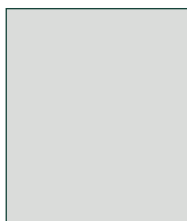
This scholarship recognizes the value of studying abroad and international travel activities that lead to acquisition of important personal skills and knowledge resulting in a more competitive resume for a future job market.

Presented to:



**Alexis Nava**

Junior,  
History Major



**Giovanna Russano**

Doctoral Candidate (1st Year),  
College of Osteopathic Medicine

# **SIGNATURE & ENDOWED PROGRAMS**

## **Alex Powell Spartan Experience Leadership Endowment**

Alex Powell was a high school senior, a dedicated student, an enthusiastic athlete, and a natural leader. Alex was shocked by a cancer diagnosis but determined to fully participate in his Spartan experience. He turned to the Resource Center for Persons with Disabilities and his family found support during a time of uncertainty and significant need. Alex never lost his zest for life. He faced its end with courage, humor, and resilience. He shared the ultimate dream that lives inside of each of us: to create a legacy and inspire the world. Alex's legacy lives on through Alex's Great State Race, a 64-mile run between MSU and U of M that financially strengthens and brings awareness to the programs that supported Alex.

## **BOND (Building Opportunities for Networking and Discovery) Program Recognition**

Welcoming students since the fall of 2010, the BOND Program offers Spartans on the autism spectrum opportunities for social, communication, and academic development. Generous private donations combined with University support and RCPD initiative give students at MSU new opportunities to connect with one another, grow both personally and as a unit, and make continued contributions to MSU and the autism community.

## **Bosco Careers Collaborative Recognition**

In the fall of 2014, MSU launched a unique careers collaborative with private gifts from alumni Michael and Kathy Bosco by matching state and federal funds in partnership with Michigan Rehabilitation Services (MRS). A full time, on campus vocational rehabilitation counselor is available to address students' needs as they transition from accessing accommodations in an academic environment to employment. Partnerships continue to be established and strengthened on campus and throughout the state to help students with disabilities reach their vocational goals.

## **Carlson Accessible Media Program (CAMP) Recognition**

Richard and Kathleen Carlson established this endowment with gratitude for the services available to their daughter, Margaret, as she earned a degree in General Business at MSU. Building on their belief in the abilities of people with disabilities, they sought to increase availability of accessible educational materials. This endowment is helping increase information accessibility through a range of technologies and close working partnership with the Tower Guard sophomore honor organization. This endowment accelerates MSU's advancement in educational media and has helped MSU become a national leader in accessible textbook production including braille, electronic, and tactile.

# **SIGNATURE & ENDOWED PROGRAMS**

## **Edith Moore Squires Vision and Resilience Endowment Recognition**

Edith Moore Squires was a lifetime Spartan, special education teacher, and fierce advocate for students with disabilities. She strived to create accessibility that would allow students to build capacity and she embraced, celebrated, and promoted human adaptability. The Edith Moore Squires Endowment provides funding to expand and promote ability and help students envision their highest potential. Funding from the program and staffing from the Gilbert family are leading programming in the areas of health, wellness and resiliency including a 1-credit course for first year students intent on starting strong at MSU.

## **Gilbert Family – Angela Sebald Ability Access Fund Recognition**

The Gilbert family is among the many Spartans going one step further to ensure MSU's leadership. Dan Gilbert, Founder and Chairman of Rocket Companies, and his wife, Jennifer Gilbert, invested in the RCPD in October of 2016. Their generous contribution honors Angela Sebald's work, and allows us to deepen our student connectivity through new staff positions. This fund improves student-to-staff ratios, allowing the RCPD to provide higher service quality and innovation for students.

## **Michael J. Hudson Emerging Opportunities Endowment**

Initiated by Dr. Thomas and Ellen Maleck, the Michael J. Hudson Emerging Opportunities Endowment provides funding to support current and emerging needs of individuals and families affected by disability. The endowment recognizes the special needs of their daughter Lynn, developed as a result of service to her country as an army nurse in Operation Desert Storm.

## **Kindzierski Autism Initiatives Endowment**

Paul and Christine Kindzierski established the Autism Initiatives endowment in 2015 to give back to MSU and create a lasting vehicle to help others build opportunity for those on the autism spectrum. They are keenly aware of the challenges associated with ASDs and desire to raise awareness and expand opportunity. The Kindzierskis envision this gift as a beacon, encouraging others to join forces to provide welcoming and transformational opportunities for students on the spectrum. This endowment extends efforts underway at the RCPD and provides permanence for efforts begun with earlier private gifts, including Baldwin Foundation support. It generates services and programming, enabling students to more fully engage in academic, living, social and career outcomes associated with an MSU education.



# **SIGNATURE & ENDOWED PROGRAMS**

## **Persons with Disabilities Empowerment Fund**

This endowment seeks to empower, motivate and promote the success of students and employees with disabilities. Contributions to this fund help to further educational, employment and extra-curricular opportunities for persons with disabilities, and advance innovations in the following areas: career and employment readiness, leadership development, assistive technology, audiovisual educational material accessibility, and disability awareness.

## **Philip Randal Trosko Memorial Endowment**

Established in 2023, this partnership with loving parents James and Kay Trosko, is a living legacy for their son Philip. It assists the MSU Resource Center for Persons with Disabilities (RCPD) with challenging and important tasks of accessibility, inclusion and belonging. Navigating successful educational journeys through MSU is the work of this endowment in his honor. The tagline, “A Bridge from Self-Awareness of a Disability to Self-Worth for Navigating a Successful Education,” emphasizes the partnership this endowment promotes.

## **The Runge Family Endowment for Students with Learning Differences**

Established in 2019, the Runge Family Endowment for Students with Learning Differences recognizes the role RCPD plays in welcoming students, reassuring families, and advancing successes for students growing through challenges. This endowment will assist students with learning differences through the funding of important programming aimed at providing structure, learning strategies, and academic tutoring. The Runge Family established this endowment to meet the evolving challenges faced by students aspiring to grow into community leaders.

## **STATE (Stern Tutoring & Alternative Techniques for Education) Program Recognition**

Generously funded by Mickey and Debbie Stern, the STATE Endowment began providing innovative and important assistance for MSU students with learning disabilities in the spring of 2004. The program provides a structured environment, effective learning strategies, academic tutoring, and other forms of academic support for students with learning disabilities.

# **SIGNATURE & ENDOWED PROGRAMS**

## **Tower Guard Scholarship**

As one of MSU's oldest continuously active student organizations, the Tower Guard selects its members from the top 5% of the freshman class. Tower Guards are consistently active, hard-working students who devote a significant amount of time toward the RCPD mission.

## **Victor Troubalos Scholarship**

The Troubalos family estate instituted four scholarship programs for Spartans across campus. At the RCPD, the Victor Troubalos gift initiated a scholarship awarded to a student who, despite a learning disability, prevails inside and outside of the classroom. Victor Troubalos Scholars are selected from the most engaged and transformed participants in the STATE program. This scholarship extends the effective learning strategies, innovative assistive technologies, academic tutoring and mentoring offered through the program.

## **Harold F. and Phyllis N. Wochholz Endowment for Persons with Disabilities**

Harold and Phyllis Wochholz established this endowment to provide the MSU Resource Center for Persons with Disabilities with a source of funding to market MSU as a university with an exceptional and sustained record of success in meeting the needs of persons with disabilities.

# IN RECOGNITION

## Tower Guard

Tower Guard is a second-year student honor society dedicated to serving students with disabilities at Michigan State University. Members of Tower Guard are chosen from the top academic achievers of the first-year class, and spend their second year dedicating 120 hours each to the service of students with disabilities. Tower Guard collaborates with the RCPD to help scribe for exams, create accessible textbooks, hold one-on-one tutoring, engage in a variety of RCPD initiatives, and build a more inclusive environment for all Spartans.

## 2024-2025 Tower Guard Executive Board

Dhruv Kekin Toprani, President  
Nityaansh Parekh, Vice President  
Zainali Shehzadali Suchedina, Secretary  
Teegan McLeod, Treasurer  
Kayla Riley, PR Chair  
Benjamin Nketsiah, Sergeant at Arms  
Olivia Woodard, Sergeant at Arms  
Josephine Vanderhyde, Historian  
Lauren Mercer, Fundraising Chair  
Trinity Amalraj, Fundraising Chair

Grace Zczynski, Run Chair  
Dylan White, Run Chair  
Jules Shaman, Social Chair  
Piper Gelfand, CSD Liaison  
Nolan Lucera, Student Advisor  
Sydney Mueller, Student Advisor  
Kristin Campbell, Faculty Advisor  
Mike Jenkins, Faculty Advisor  
Ed Timke, Faculty Advisor

## ASL Interpreters for Today's Reception

Janet Jurus & Erica Allen

## Captioning Services

Archive 20/20 Captioning

Thank you for attending the Annual RCPD Awards and Appreciation Reception!

Your support is appreciated and your valuable contributions attribute to our success. RCPD strives for excellence in all we do and your involvement is essential to the work we do.

# MSU RCPD STAFF

## Leadership & Administrative Staff

**Kristin Traskie**, Executive Director of Health Promotion, Engagement, Accessibility, and Accommodations, University Health and Wellbeing

**Allen Sheffield**, Director

**Shelby Gombosi**, Associate Director

**Tyler Smeltekop**, Assistant Director of Assistive Technology Innovation

**Zachary French**, Assistant to the Director

**Robert Briseño**, Operations Coordinator/ Alternative Testing Coordinator

**Kristin Campbell**, Leadership Development & Accessible Media Coordinator

**Rachel Giddings**, Documentation & Public Relations Coordinator

## Access Specialists

**Savannah Blow**, Neurodivergence Disabilities

**Ellie Brigger**, Neurodivergence Disabilities

**Colleen Floyd**, Neurodivergence Disabilities

**Kelsey Foote**, Neurodivergence Disabilities

**Tesia Freer**, Blindness, Visual Impairment, & Other Disabilities

**Jared Grysko**, Deaf and Hard-of-Hearing and Chronic Health Disabilities

**Lindsay Hill**, Neurodivergence Disabilities & BOND Program Coordinator

**Hannah Huey-Jones**, Neurodivergence Disabilities

**Jessica Lutz**, Neurodivergence Disabilities

**James Madaski**, Neurodivergence Disabilities

**Kiersten Manos**, Chronic Health Disabilities

**Jennifer Montague**, Neurodivergence Disabilities

**Virginia Rutan**, Neurodivergence Disabilities & Student Athlete Liaison

**Lynne Swerhone**, Chronic Health and Mobility Disabilities

## Real-Time Captioners

**Susie Hoffmann**

**Shelly Martinez**

## Bosco Careers Collaborative

**Tanya Adams**, Vocational Rehabilitation Counselor, Michigan Rehabilitation Services

## Student Employees

**Julia Feuerborn**, Reception Assistant

**Surabhi Gangadkar**, Assistive Technology Manager

**Anna Johnson**, Reception Assistant

**Paige Lawson**, Reception Assistant and Public Relations Student Coordinator

**Ryan Marvar**, Wayfinding Team Leader

**Aeryn VanDerSlik**, E-Texting Manager

**Katherine West**, E-Texting Manager

**Sakari Wilcox**, Accessible Media Manager



**Special Thanks to Our Sponsor:**



*Building Dreams Together*



Resource Center for Persons with Disabilities  
University Health and Wellbeing  
MICHIGAN STATE UNIVERSITY